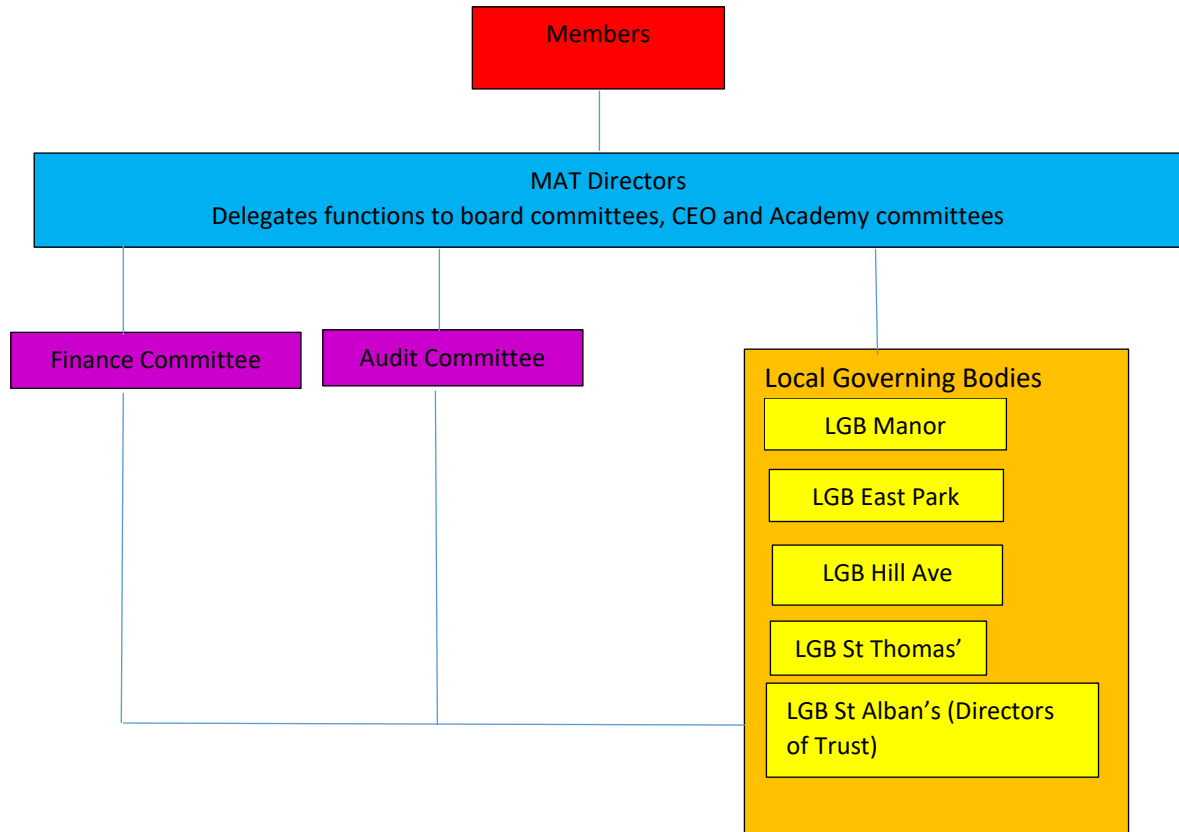


Governance and Trust Board – structures and accountability framework

Manor MAT Structure



Directors become LGB of any special measures school until the school is operating effectively in all OFSTED areas and then LGB of its own put in place

Members: 5

- **Tim Westwood** Currently EFA employee
Appointed Sept 2015

Previously an Assistant Director of Education in Wolverhampton - Tim worked for Building Schools for the Future in Wolverhampton. He managed a multimillion pound budget within his role in a LA. Tim is a Father at St Mary's C of E within or school community

Key Areas: Finance, Procurement, Site Management and Building Projects

- **Don Gwinnett – Retired School Leaders and OFSTED Inspector**
Appointed Sept 2015
A retired OFSTED inspector for Primary and Secondary schools, Don also worked for SERCO as Director of Inspections and has worked on major national programmes for the DfE.
Previously worked as a senior leader in secondary schools in our region
Key Areas: Standards & Achievement, Data Analysis, Statutory Requirements, Policy Documentation

- **Reverend Emma Stanford- Parish Priest**
Appointed Sept 2015
Currently Vicar St Mary's Church Hurst Hill Sedgley, Church Community.
Previously Vicar in Parishes across the region
Key Areas: Spiritual, Moral, Social and Cultural development. Staff and Pupil Well being RE Curriculum. Christian distinctiveness

- **David Coles Criminal Lawyer and Director of a Criminal Law firm**
Appointed Sept 2015
David manages a Multi Million pound budget as part of his work within his Law Firm
David has been the Chair of Manor Primary for 15 years (One of best performing schools in the country) David has taken responsibility for Performance management and target setting, Development of Leadership at all levels. He has led within the governing body SEND/ PP for many years implementing strategies that enables all SEND and PP children to achieve at least National Averages in all core subjects
Key Areas: Leadership & Management, Finance, Achievement of Pupil Groups

- **Donal Knipe – Retired Headteacher**
Appointed Sept 2016
Donal has worked as Senior Leaders and Head for more than 20 years and more recently He has expertise in working with EAL and disadvantaged leaders
He has significant expertise in improving quality of teaching and learning and outcomes in all primary year groups
Key Areas: Leadership & Management, Teaching & Learning

Trustees / Directors: 11

- **David Coles: Criminal Lawyer and Director of a Criminal Law firm in Walsall.**
Appointed Sept 2015
David manages a Multi Million pound budget as part of his work within his Law Firm
David has been the Chair of Manor Primary for 15 years (One of best performing schools in the country) David has taken responsibility for Performance management and target setting, Development of Leadership at all levels. He has led within the governing body SEND/ PP for many years implementing strategies that enables all SEND and PP children to achieve at least National Averages in all core subjects
Key Areas: Leadership & Management, Finance, Achievement of Pupil Groups

- **Anita Cliff – CEO Manor MAT, OBE; B.Ed; M.Ed. NLE; PQSI**
Appointed Sept 2015
Anita has been a Headteacher for 20 years and is a National Leader of Education.
Anita has worked with many special measures schools and RI schools over the past 15 years and has a proven track record of supporting them out of these categories
Anita has led Manor Primary School rapidly improving it and sustaining it as being one of the best performing schools in the country.
Key Areas: School Improvement

- **Mohammed Sharif - Surgical manager for Advanced Medical Solutions**
Appointed Sept 2015
 Mo has been vice chair of governors for many years
 Manages Multi Million pound Budget as part of his role
Key Areas: Financial Management

- **Helena Smith - Music Teacher for Walsall Primary School**
Appointed Sept 2015
 Helena has been a primary school teachers for 20 years
Key Areas: Teaching & Learning

- **Dr Tracy Whitmore - Senior Lecturer in Primary and Early Years Education at the University of Birmingham.**
Appointed Sept 2015
 Tracy has a background in EYFS and currently trains teachers.
 Tracy has been an EYFS Teacher and has worked training teachers for more than 20 years
Key Areas: Teaching & Learning, EYFS

- **Sarah Farnell – Human Resources Manager for a Housing Group**
Appointed Sept 2015
 Sarah has worked in Human Resources for 15 years at a number of companies
Key Areas: Human Resources, Staff Recruitment

- **Katie Morgan – Independent Financial Auditor**
Appointed Dec 2016
 Katie has led Audit Services previously within a LA, Katie now leads her own audit company
Key Areas: Financial Management

- **Anthony Dibble – Ofsted Inspector and University Lecturer**
Appointed Dec 2016
 Anthony has trained teachers for more than 20 years, previously he was a teacher in a secondary school
Key Areas: Teaching & Learning, Leadership & Management

- **Reverend Nick Watson- Parish Priest**
Appointed Sept 2018
 Reverend Nick Watson is Team Rector and Rural Dean, a Parish Priest with oversight of others
 He has been a chair of governors for many years of two schools
Key Areas: Curriculum, Leadership & Management, Spiritual, Moral, Social and Cultural development. Staff and Pupil Well-being; Christian distinctiveness

- **Martin Morris- Director of Printing Company**
Appointed Sept 2018
 Martin is a Director of a printing company
 He has been a vice chair of governors for two schools for many years
Key Areas: Financial Management; Leadership & Management