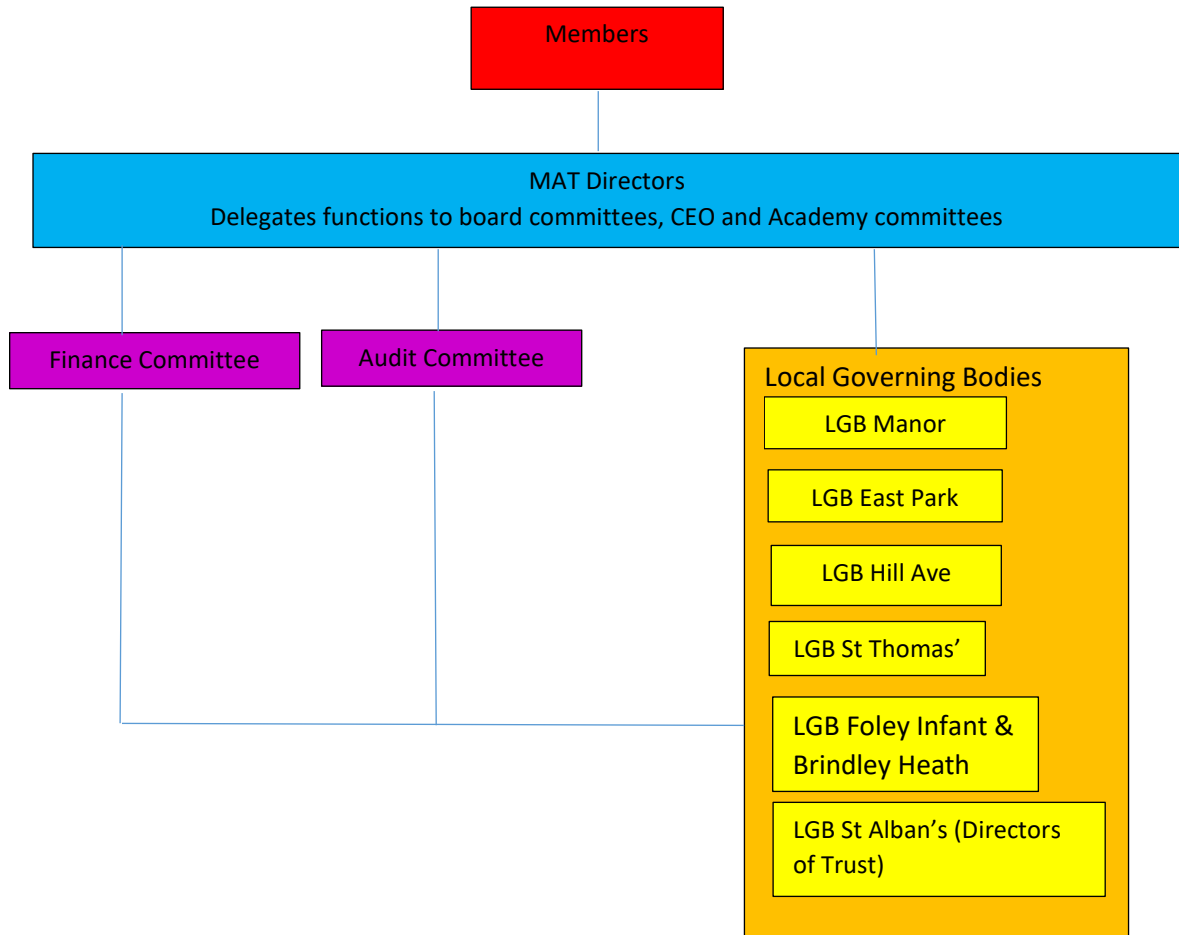


Governance and Trust Board – structures and accountability framework

Manor MAT Structure



Directors become LGB of any special measures school until the school is operating effectively in all OFSTED areas and then LGB of its own put in place

Members: 5

➤ **Tim Westwood Currently EFA employee**

Previously an Assistant Director of Education in Wolverhampton - Tim worked for Building Schools for the Future in Wolverhampton. He managed a multimillion pound budget within his role in a LA.

Tim is a Father at St Mary's C of E within or school community

Key Areas: Finance, Procurement, Site Management and Building Projects

➤ **Don Gwinnett – Retired School Leaders and OFSTED Inspector**

A retired OFSTED inspector for Primary and Secondary schools, Don also worked for SERCO as Director of Inspections and has worked on major national programmes for the DfE. Previously worked as a senior leader in secondary schools in our region

Key Areas: Standards & Achievement, Data Analysis, Statutory Requirements, Policy Documentation

➤ **Reverend Emma Stanford- Parish Priest**

Currently Vicar St Mary's Church Hurst Hill Sedgley, Church Community. Previously Vicar in Parishes across the region

Key Areas: Spiritual, Moral, Social and Cultural development. Staff and Pupil Well being RE Curriculum. Christian distinctiveness

➤ **David Coles Criminal Lawyer and Director of a Criminal Law firm**

David manages a Multi Million pound budget as part of his work within his Law Firm David has been the Chair of Manor Primary for 15 years (One of best performing schools in the country) David has taken responsibility for Performance management and target setting, Development of Leadership at all levels. He has led within the governing body SEND/ PP for many years implementing strategies that enables all SEND and PP children to achieve at least National Averages in all core subjects

Key Areas: Leadership & Management, Finance, Achievement of Pupil Groups

➤ **Donal Knipe – Retired Headteacher**

Donal has worked as Senior Leaders and Head for more than 20 years and more recently He has expertise in working with EAL and disadvantaged leaders

He has significant expertise in improving quality of teaching and learning and outcomes in all primary year groups

Key Areas: Leadership & Management, Teaching & Learning

Trustees / Directors: 11

- **David Coles: Criminal Lawyer and Director of a Criminal Law firm in Walsall.**
David manages a Multi Million pound budget as part of his work within his Law Firm
David has been the Chair of Manor Primary for 15 years (One of best performing schools in the country) David has taken responsibility for Performance management and target setting, Development of Leadership at all levels. He has led within the governing body SEND/ PP for many years implementing strategies that enables all SEND and PP children to achieve at least National Averages in all core subjects
Key Areas: Leadership & Management, Finance, Achievement of Pupil Groups

- **Anita Cliff – CEO Manor MAT, OBE; B.Ed; M.Ed. FCCT; NLE**
Anita has been a Headteacher for 20 years and is a National Leader of Education.
Anita has worked with many special measures schools and RI schools over the past 15 years and has a proven track record of supporting them out of these categories
Anita has led Manor Primary School rapidly improving it and sustaining it as being one of the best performing schools in the country.
Key Areas: School Improvement

- **Mohammed Sharif - Surgical manager for Advanced Medical Solutions**
Mo has been vice chair of governors for many years
Manages Multi Million pound Budget as part of his role
Key Areas: Financial Management

- **Helena Smith - Music Teacher for Walsall Primary School**
Helena has been a primary school teachers for 20 years
Key Areas: Teaching & Learning

- **Dr Tracy Whitmore - Senior Lecturer in Primary and Early Years Education at the University of Birmingham.**
Tracy has a background in EYFS and currently trains teachers.
Tracy has been an EYFS Teacher and has worked training teachers for more than 20 years
Key Areas: Teaching & Learning, EYFS

- Ian Rumble –Police Officer**
- Ian has worked for West Midlands police for more than 30 years
- **Key Areas: School Improvement; Curriculum, Leadership & Management**

- **Donal Knipe - A retired Deputy Headteacher from a Birmingham School**
Donal has been a teacher and school leader for 35 years
Key Areas: Teaching & Learning, Leadership & Management

- **Katie Morgan – Independent Financial Auditor**
Katie has led Audit Services previously within a LA, Katie now leads her own audit company
Key Areas: Financial Management

- **Anthony Dibble – Ofsted Inspector and University Lecturer**
Anthony has trained teachers for more than 20 years, previously he was a teacher in a secondary school
Key Areas: Teaching & Learning, Leadership & Management

- **Reverend Nick Watson- Parish Priest**
Reverend Nick Watson is Team Rector and Rural Dean, a Parish Priest with oversight of others
He has been a chair of governors for many years of two schools
Key Areas: Curriculum, Leadership & Management,; Spiritual, Moral, Social and Cultural development. Staff and Pupil Well-being; Christian distinctiveness

- **Martin Morris- Director of Printing Company**
Martin is a Director of a printing company
He has been a vice chair of governors for two schools for many years
Key Areas: Financial Management; Leadership & Management